

LINER CONNECTION SYSTEM

WILLPOX® SP Flex 1:1

WILLPOX® SP Flex 1:1

DIBt approval Z-42.3-557

2C epoxy resin with a high adhesion even on wet surfaces, on stoneware and concrete. Due to its properties the resin can be used for binding hose liner at the shaft.

HOUSE CONNECTION REHABILITATION

Light curing EP hybrid resin

WILLPOX® LC

WILLPOX® LC

Light curing (LED / UV) 1C epoxy resin system for rehabilitation of house connections and down pipes.

HOUSE CONNECTION REHABILITATION

On-site curing EP- and silicate resin system

WILLPOX® 20

WILLPOX® 50

WILLPOX® 100

WILLPOX® 1

WILLKAT® HL (3C)

WILLKAT® HL 2C Summer

WILLKAT® HL 2C Winter

WILLPOX® RR

WILLPOX® 20

Fast 2C epoxy resin system for rehabilitation of house connections and down pipes by means of cold curing.

WILLPOX® 50

2C epoxy resin system for rehabilitation of house connections by means of hot or cold curing.

WILLPOX® 100

2C epoxy resin system for rehabilitation of house connections by means of hot or cold curing.

WILLKAT® HL (3C), WILLKAT® HL 2C Summer, WILLKAT® HL 2C Winter

Fast 3C and 2C silicate resin systems for rehabilitation of house connections and down pipes by means of cold curing.

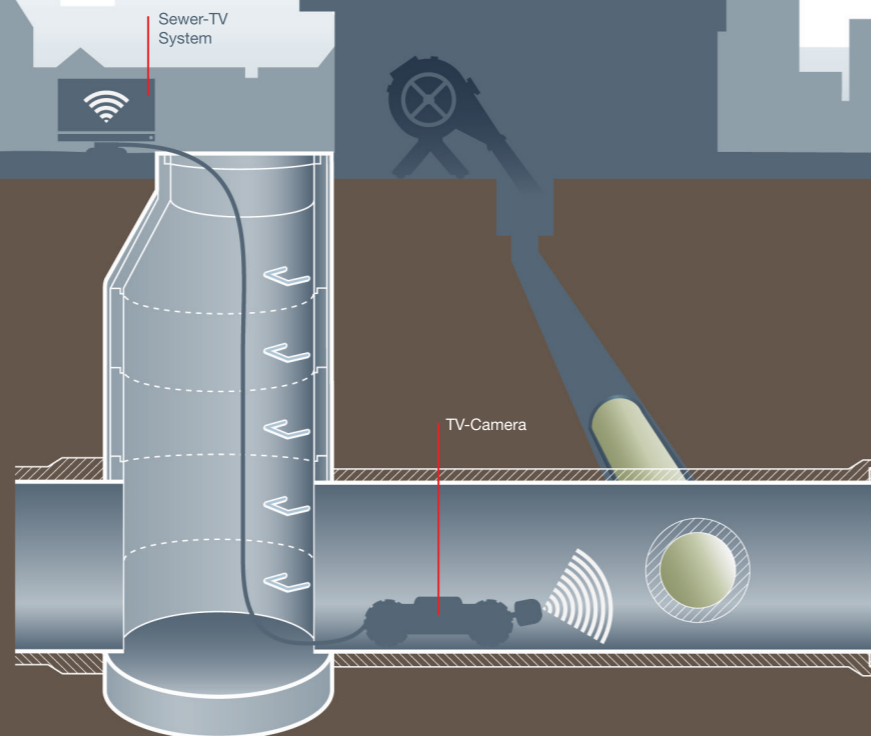
WILLPOX® 1 and WILLPOX® RR

2C epoxy resin systems free of alkylphenols and benzyl alcohol. Due to the adapted reactivity and the mechanical characteristics of hardened coatings, the systems are particularly suitable for sewer renovation using the lining method.



Our Products for a clean Environment

F.WILLICH – SEWER REPAIR



F. Willich GmbH + Co. KG
Planetenfeldstr. 120
44379 Dortmund

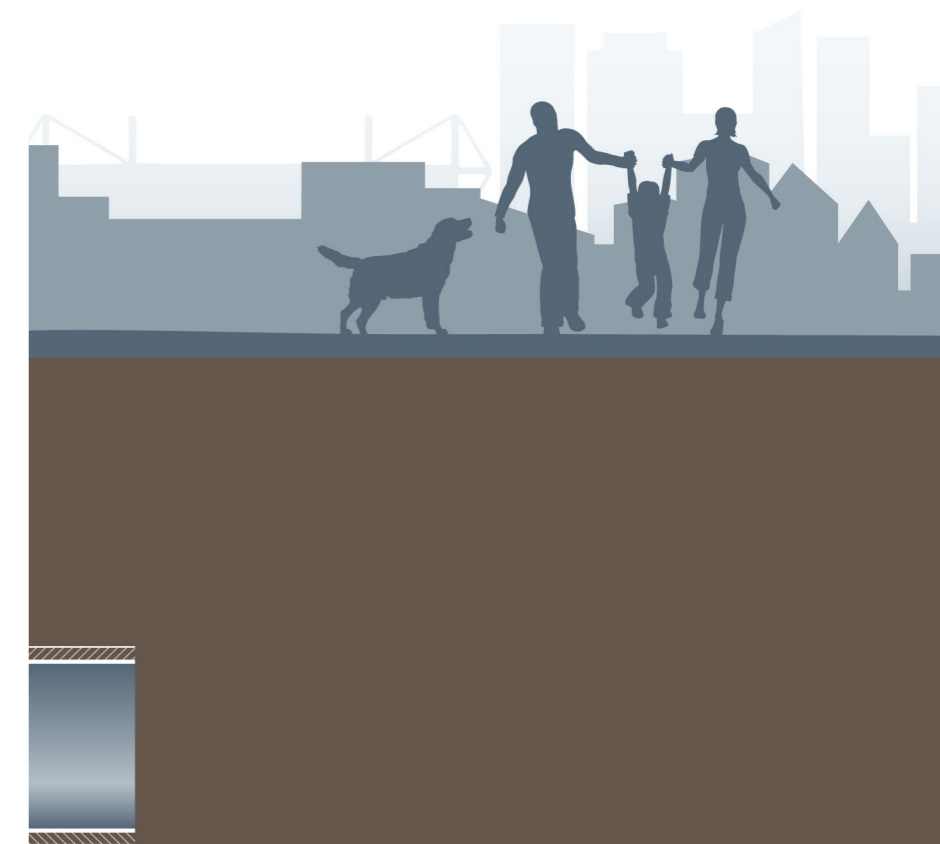
Nicolas Houy
Head of Business Development Sewer Repair

Phone +49 (0) 6873 9999 216
Mobile +49 (0) 173 1462 732

Mail nicolas.houy@f-willich.de

www.f-willich.de

www.f-willich.de



INJECTION SYSTEM

WILLSTOP® 1K+ WILLPUR® WS
WILLSTOP® 1 WILLPUR® WS HF
WILLSTOP® FLEX

WILLPUR® WS 2C Cartridge Systems

2C polyurethane resins for sealing selective infiltrations of water in manholes and accessible pipes.

WILLPUR® WS 3C Injection Systems

3C polyurethane resins for a permanent stabilizing sealing of water infiltrations in defective manhole constructions and accessible pipes. The works are performed on the inside of the construction. The actual sealing is on the outside of the construction.

WILLSTOP® 1 and WILLSTOP® 1K+

WILLSTOP® 1 and WILLSTOP® 1K+ are high-efficient one-component systems for sealing water leakages with high water flows. The products can be used to fill cavities in rock cracks, for soil stabilization and anchoring in gravel. The reaction times can be adjusted with a concerted amount of WILLADD® 1.

WILLSTOP® Flex

WILLSTOP® Flex is a dark brown water-reactive liquid. The final product is characterized by high flexibility and elasticity. When it comes into contact with water, it expands and quickly cures to a tough, flexible, closed-cell polyurethane foam. The reactivity depends on temperature and the amount of accelerator WILLADD® Flex.

SHORT LINER SYSTEM

WILLKAT® PL (3C) WILLKAT® PL 2C Fast plus
WILLKAT® PL 2C Slow WILLKAT® SL - S (Summer)
WILLKAT® PL 2C Summer WILLKAT® SL - W (Winter)
WILLKAT® PL 2C Winter WILLKAT® SL - F (Fast)
WILLKAT® PL 2C Fast WILLKAT® ESM System

WILLKAT® PL "Short Liner Systems"

DIBt approval Z-42.3-523

3C and 2C silicate resin systems to repair non accessible sewer pipes with defined damage symptoms.

WILLKAT® SL "Short Liner Systems"

DIBt approval Z-42.3-523

2C silicate resin systems to repair inaccessible sewer pipes with defined damage symptoms.

- WILLKAT® SL - S (Summer)
- WILLKAT® SL - W (Winter)
- WILLKAT® SL - F (Fast)

WILLKAT® ESM System

WILLKAT® ESM System is a combination of stainless steel sleeve and WILLKAT® PL Short Liner System.

TROWEL- AND GROUTING SYSTEM

WILLPOX® RS WILLPOX® SP 1:1 WILLIT® S CF

WILLPOX® RS

DIBt approval Z-42.3-529

2C epoxy resin with a high adhesion even on wet surfaces, on stoneware and concrete. Thanks to its properties the resin can be used with robot systems for thermal curing and natural curing.

WILLPOX® SP 1:1

DIBt approval Z-42.3-560

2C epoxy resin with a high adhesion even on wet surfaces, on stoneware and concrete. Due to its properties the resin can be used with robot systems in non accessible pipes and for filling by hand.

WILLIT® S CF

Cement-based mineral material for the repair of laterals. Due to its properties the mortar can be used with robot systems in non accessible pipes.

MANHOLE REHABILITATION

WILLIT® S Rapid ^A WILLIT® S KSM Fast ^B
WILLIT® S Rapid F ^A WILLIT® S KBM ^C
WILLIT® S KBM Plast ^A WILLIT® S KBM Fast ^D
WILLIT® S KSM ^B WILLIT® S WS ^E
WILLKAT® BS

WILLIT® S

Cement-based mineral materials. All product systems are ready for use dry mixes for various applications in sewer repair.

- frictional grouting works
- repair and renovation of concrete surfaces
- immediate closure of water ingress points
- sealing between floor surface and masonry etc.

WILLKAT® BS

DIBt approval Z-59.12-445

WILLKAT® BS is a plastic-modified silicate coating with the highest chemical resistance. Against pH values of 0 - 14 is WILLKAT® BS permanently resistant.

Applicable by:

- separator plants
- manhole pits
- digestion towers
- LAU plants
- tank tubs
- waterways

